

Mercedes-Benz

MODEL, CHASSIS, ENGINE GUIDE 1946-1996

SEDAN COUPE CONVERTIBLE ROADSTER LIMOUSINE 4WD

VERSION 2

INDEX

INTRODUCTION		3
GENERAL INFORMATION		4
CHASSIS CODES		6
ENGINE CODES		7
MODEL REFERENCE		8
DETAILS		
Limousines	W100 W186 W188 W189	11
Roadsters	R107 W113 W121 R129 R170 W198	13
1946-1955	W136 W187 W191	16
Ponton (Roundy)	W105 W120 W121 W128 W180	17
Heckflosse (Finny)	W110 W111 W112	19
S-Class	W108 W109 W116 W126 W140	21
E-Class	W114 W115 W123 W124	25
C-Class	W201 W202	30
4WD	W460 W461 W463	32

This guide is intended to cover all Mercedes-Benz passenger models whose production commenced in the 50 years since the recommencement of passenger vehicles production in 1946.

Conventions

DaimlerChrysler publications have been used as the major reference in compiling this data. The conventions used in those publications have been adopted here. Terminology etc. may therefore vary from other publications. The most recent publication has been accepted as the correct source.

Errors – If you find any please let me know.

Chassis Codes:

- The first three digits of the chassis code specify the general body style (i.e.W123). The next digit usually indicates engine fuel type, petrol (0) or Diesel (1). The next two digits indicate the specific version of the body style.
- Chassis codes quoted are for passenger vehicles only. Special bodies like ambulances, vans, long wheelbase etc. may have separate codes.

Engine Code and power output:

- The first digit of the engine code indicates engine fuel type, gasoline (1) or Diesel (6). The next two digits indicate the type. The last three digits indicate a specific version.
- Engine details provided are those quoted by Mercedes-Benz as the standard engine for the specified vehicle. Due to different fuel standards and exhaust emission requirements, power outputs of engines may vary between markets and may not be consistent within the same engine type and size.
- To convert horsepower into kilowatts multiply by 0.7457

Production Dates

Frequently, Mercedes-Benz produced a limited number of pre volume production vehicles several months prior to commencing volume production. For some models this may have occurred in the previous year. Production dates and numbers quoted include pre volume production.

Production Numbers:

- Production numbers quoted for some models may also include chassis only, special bodies (eg. ambulances) and special protection versions.
- Production numbers for G-Wagen are for non military vehicles only.

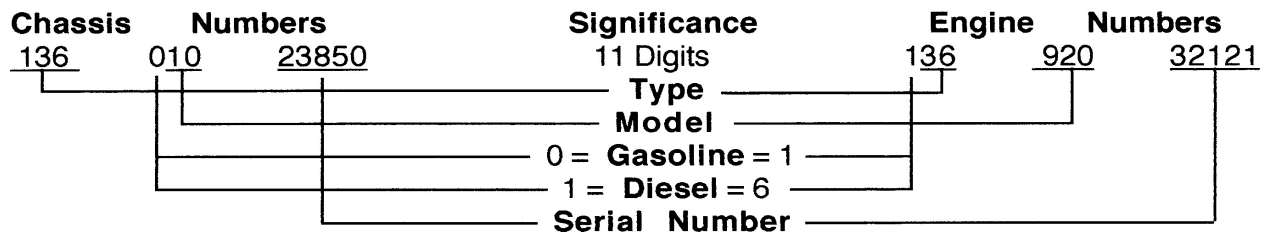
GENERAL INFORMATION

SOME LETTERS USED IN MODEL, CHASSIS AND ENGINE DESCRIPTIONS:

- A - (Cabriolet A) Designates a two door, two passenger cabriolet.
 - A - Chassis code prefix for a cabriolet (eg. A124)
 - AMG – High performance or racing version modified by AMG
 - B – (Cabriolet B) Two doors with casual rear seat and separate rear quarter windows
 - C - Chassis code prefix for a coupe (eg. C126)
 - C – Model name prefix for C class (eg. C280)
 - C – (Cabriolet C) Two doors with casual rear seat but no separate rear quarter windows
 - D - Indicates diesel powered (eg. 240D)
 - D – (Cabriolet D) Four doors with full rear seat but no separate rear quarter windows
 - E - *Einspritzer* indicates fuel injected engine
 - E – Model name prefix for E class (eg. E280)
 - F – (Cabriolet F) Four doors with full rear seat and separate rear quarter windows
 - G - *Gelandewagen* four wheel drive off road vehicle
 - K - *Kurz* indicates short wheelbase (eg. SSK)
 - K - *Kompressor* indicates supercharged engine
 - L - *Licht* indicates light weight (eg. 190SL)
 - L - *Lang* indicates long wheelbase (eg. 560SEL)
 - M – Engine code prefix for a petrol/gasoline engine
 - OM – Engine code prefix for diesel engine (ie. oil motor)
 - R - Chassis code prefix for a roadster (eg. R107)
 - S – Model name prefix for S class (eg. S600)
 - S - Chassis code prefix for a station wagen (eg. S124)
 - S – Sport (eg. 300SL)
 - S - Super (usually higher output version) (eg. 220S)
 - S – Special (eg. 380SEC)
 - SS - Super sport
 - T Touring and transport - model descriptor for a station wagon
 - V - *Vorn* (front) used to indicate engine location on model name 170 (eg. 170V)
 - W - *Wagen* Chassis code prefix for a four door passenger car or any other body style where a specific prefix is not used (eg. W198)
- Lower case (a, b, c, d) indicates different versions of the same general chassis (eg. 180a, 180b, 180c, versions of chassis W120)
- 4MATIC - Chassis includes additional drive to the front wheels

CHASSIS AND ENGINE NUMBERING SYSTEMS

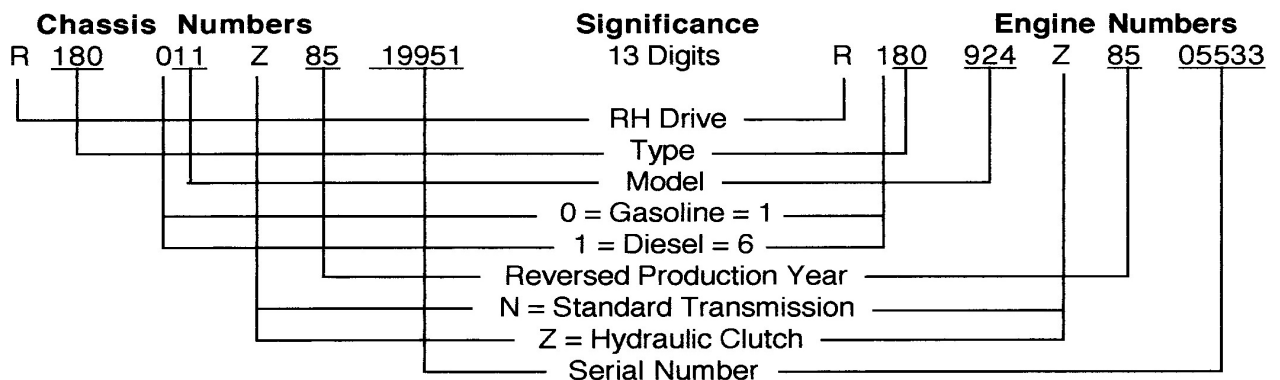
1946-1950



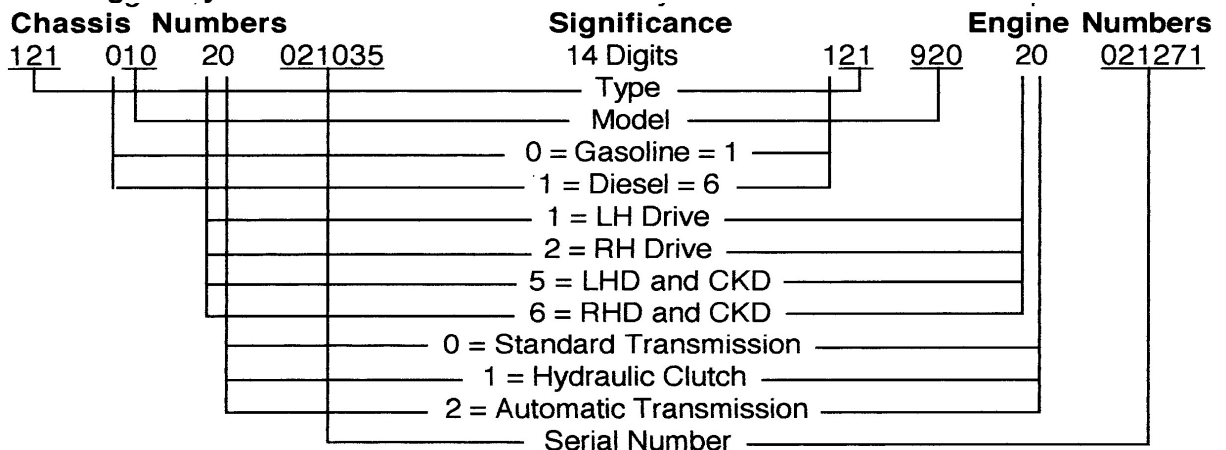
1951-1952



1953-1959



1960 through early 1980s



From the early 1980s to 1996 – The earlier system modified to prefix chassis numbers with a VIN code usually WDB. United States adopted a separate system.

PART NUMBERING

Standard part numbers are two groups of 6 digits. DIN standard parts start with a zero and M-B internal standard parts start with a 9.

Specific part numbers are four groups of digits AAA BBC DD EE

eg. 116 678 01 10

116 - chassis type, engine type (W116)

67 - group (windows).

8 - sub-group (rear)

01 - version or modification (tinted, heat absorbing)

10 - actual part identification (glass)

CHASSIS CODES

Code	General Description
W100	600 4-door limousine, 4 and 6-door pullman and Landaulet 1963-81
W105	219 sedan (Ponton/roundie) 1956-59
R107	280 to 560 SL and SLC roadster, coupe 1970-1989
W108	S-Class sedan 250S to 300SEb 1965-1972
W109	S-Class sedan 300 SEL series 1965-1972
W110	190,190D, 200, 200D, 230 sedan (Heckflosse/finny) 1961-1968
W111	220 to 280SE 3.5 sedan, coupe, cabriolet (Heckflosse/finny) 1959-1971
W112	300SE sedan, coupe and cabriolet (Heckflosse/finny) 1961-1967
W113	230, 250, 280 SL roadster; (Pagoda) 1963-1971
W114	230 to 280 sedan, coupe 6-cylinder ;(/8, Strichacht) 1968-1976
W115	200 to 240D sedan 4- and 5-cylinder; (/8, Strichacht) 1968-1976
W116	S-Class sedan 280S to 450SEL 6.9 1972-1980
W120	180 series sedan (Ponton/roundie) 1953-1962
W121	190SL roadster, 1955-1963
W121	190 series sedan (Ponton/roundie) 1956-1961
W123	200 to 300 sedan, station wagon, coupe 1975-1986
W124	200 to E60 sedan, coupe, station wagon 1984-1997
W126	S-Class sedan, coupe 260SE to 560SEC 1979-1992
W128	220SE sedan cabriolet and coupe (Ponton/roundie) 1958-1960
R129	280 to 600 SL roadster 1988-2001
W136	170V, 170S 170D and variations 1946-1955
W140	S-Class sedan, coupe S280 to CL600 1991-1998
W163	M-Class ML 1997-
W168	A-Class sedan/ultra mini van 1997-
R170	SLK roadster 1996-
W180	220a and 220S sedan cabriolet and coupe (Ponton/roundie) 1954-1959
W186	300, 300b, 300c (Adenauer)1951-1957
W187	220 sedan. cabriolet and coupe 1951-1955
W188	300S and Sc coupe cabriolet and roadster 1951-1958
W189	300d (Adenauer)1957-1962
W191	170Sb, 170D-S 1952-1953
W198	300SL roadster, coupe; (Flügeltürer/Gullwing) 1954-1963
W201	190 series sedan; (Baby-Benz) 1982-1993
W202	C-Class sedan and T-model station wagon 1992-2000
W203	C-Class sedan 2000-
C208	CLK coupe 1997-
W210	E-Class sedan and T-model station wagon 1995-
C215	S-Class coupe 1999-
W220	S-Class sedan 1998-
W460	G-Class, (Geländewagen) 1979-1992
W461	G-Class, (Geländewagen) 1991-
W463	G-Class, (Geländewagen) 1989-

ENGINE CODES

Code Nr.	Cylinders	Displacement (litres)	Type	Production
GASOLINE				
M 102	4	2.0-2.3	carb. and fuel injection	1979-
M 111	4	2.0-2.3	fuel inj. and supercharged	1993-
M 115	4	2.0 - 2.3	Carburettor	1967-
M 121	4	1.9 - 2.0	Carburettor	1953-68
M 136	4	1.7 - 1.8	Carburettor	1946-57
M 103	6	2.6 - 3.0	fuel injection	1985-
M 104	6	2.8 - 3.2	fuel injection	1991-
M 108	6	2.5	carburettor	1965-69
M 110	6	2.8	carb. and fuel injection	1972
M 112	V6	2.4 - 2.8	fuel injection	1997-
M 114	6	2.5	carb. and fuel injection	1967-72
M 123	6	2.5	carburettor	1976-
M 127	6	2.2 - 2.3	fuel injection	1958-67
M 129	6	2.5	fuel injection	1965-68
M 130	6	2.8	carb. and fuel injection	1967-76
M 180	6	2.2 - 2.3	Carburettor	1951-76
M 186	6	3.0	carburettor	1951-67
M 188	6	3.0	carburettor	1952-55
M 189	6	3.0	fuel injection	1957-67
M 198	6	3.0	fuel injection	1954-63
M 199	6	3.0	fuel injection	1955-58
M 100	V8	6.3 - 6.9	fuel injection	1964-
M 116	V8	3.5 - 4.2	fuel injection	1969-
M 117	V8	4.5 - 5.6	fuel injection	1971-
M 119	V8	4.0 - 5.0	fuel injection	1991-
M 120	V12	6.0	fuel injection	1991-
DIESEL				
OM 601	4	1.9 - 2.0	injection	1983
OM 604	4	2.0 - 2.2	injection	1996
OM 605	4	2.5	turbo injection	1996
OM 611	4	2.2	turbo injection	1997
OM 615	4	2.0 - 2.2	injection	1967
OM 616	4	2.4	injection	1973
OM 621	4	1.9 - 2.9	injection	1958-68
OM 636	4	1.7 - 1.8	injection	1949-61
OM 602	5	2.5 - 3.0	inject. and turbo	1990
OM 617	5	3.0	injection	1974
OM 617A	5	3.0	turbo injection	1977
OM 603	6	3.0 - 3.5	turbo injection	1985 -
OM 606	6	3.0	turbo injection	1993 -

MODEL REFERENCE

Model name	Chassis reference
170	
170V 170Va 170Vb 170S 170S-V 170D 170Da 170Db 170S-D	W136 (46-55)
170Sb 170D-S	W191 (52-53)
180	
180 180a 180b 180c 180D 180Db 180Dc	W120 (53-62)
C180 C180T	W202 (92-00)
190	
190SL	W121 (55-63)
190 190b 190D 190Db	W121 (56-61)
190c 190Dc	W110 (61-68)
190 190E 190E2.3 190E2.3-16 190E2.5 190E2.5-16 190E2.6	
190E1.8 190D 2.2 190D 2.5 190D 2.5 Turbo	W201 (82-93)
200	
200 200D	W110 (61-68)
200 200D 200T	W123 (75-86)
200 200D	W115 (68-76)
200GE	W460 (79-92)
200 200E E200 200D E200D 200CE 200T 200TE 200TD	W124 (84-97)
C200 C200 Compressor C200 Diesel C200T C200 T Compressor	
200GE/G200	W463 (90-)
C200T Diesel	W202 (92-00)
SLK 200 SLK 200 Compressor	R170 (96-)
219	
219	W105 (56-59)
220	
220	W187 (51-55)
220a 220S	W180 (54-59)
220SE	W128 (58-60)
220b 220Sb 220SEb	W111 (59-71)
220 220D	W115 (68-76)
220D	W123 (75-86)
220E E220 220TE E220T 220CE E220 C	W124 (84-97)
C220 C220T C220 Diesel C220 Diesel T	W202 (92-00)
230	
230S	W111 (59-71)
230	W110 (61-68)
230SL	W113 (63-71)
230	W114 (68-76)
230	W115 (68-76)
230 230E 230C 230CE 230T 230TE	W123 (75-86)
230G 230GE	W460 (79-92)
230E 230CE 230TE	W124 (84-97)
230GE/G230	W463 (90-)
230GE	W461 (91-96)
C230 C230 Compressor C230T C230T Compressor	W202 (92-00)
E230 E230T	W210 (95-)
SLK 230 Compressor	R170 (96-)
240	
240D 240D3.0	W115 (68-76)
240D 240TD	W123 (75-86)
240GD	W460 (79-92)
C240 C240T	W202 (92-00)

Model name	Chassis reference
250	
250SE	W111 (59-71)
250SL	W113 (63-71)
250S 250SE	W108 (65-72)
250 250E 2502.8 250C2.8	W114 (68-76)
250 250T	W123 (75-86)
250D E250D E250 Turbodiesel 250TD E250 DieselT	
250GD	W460 (79-92)
E250 Turbodiesel T	W124 (84-97)
250GD	W463 (90-)
C250D	W202 (92-00)
260	
260SE	W126 (79-91)
260E 260E 4MATIC	W124 (84-97)
280	
280SE 280SE 3.5	W111 (59-71)
280SL	W113 (63-71)
280S 280SE 280SE3.5 280SE 4.5 280SEL 280SEL 3.5 280SEL 4.5	W108 (65-72)
280 280C 280E 280CE	W114 (68-76)
280SL 280SLC	R107 (70-89)
280S 280SE 280SEL	W116 (72-80)
280 280C 280E 280CE 280TE	W123 (75-86)
280S 280SE 280SEL	W126 (79-92)
280GE	W460 (79-92)
SL280	R129 (88-01)
280E E280 280TE E280T	W124 (84-97)
280SE/S280	W140 (91-98)
C280 C280T	W202 (92-00)
290	
290GD 290GD Turbodiesel	W461 (91-96)
300	
300 300b 300c	W186 (51-56)
300S 300Sc	W188 (51-58)
300SL	W198 (54-63)
300d	W189 (57-62)
300SE 300SEL	W112 (61-67)
300SEb	W108 (65-72)
300SEL 300SEL 3.5 300SEL 4.5 300SEL 6.3	W109 (65-72)
300SL	R107 (70-89)
300SD	W116 (72-80)
300D 300CD 300TD 300D Turbo 300CD Turbo 300TD Turbo	W123 (75-86)
300E 300E2.6 300E2.8 300CE 300TE 300D 300D2.5 300SD	
300SDL 300SE 300SEL	W126 (79-92)
300GD	W460 (79-92)
300E E300 4MATIC 300E-24 300D E300 Diesel 300D 4MATIC	
E300 turbodiesel 300CE 300CE-24 300TE E300T 4MATIC	
300TE-24 300TD E300 Turbodiesel 4MATIC	W124 (84-97)
300SL 300SL-24	R129 (88-01)
300GE/G300 300GD/G300 turbodiesel	W463 (90-)
300SE 300SD S300 Turbodiesel	W140 (91-98)
E300D E300 Turbo	W210 (95-)

Model name	Chassis reference
320	
320E E320 320CE E320 Coupe 320TE E320T	W124 (84-97)
SL320	R129 (88-01)
G320	W463 (90-)
S320 S320L	W140 (91-98)
E320 E320T	W210 (95-)
350	
350SL 350SLC	R107 (70-89)
350SE 350SEL	W116 (72-80)
350SD 350SDL	W126 (79-92)
350GD/G350 turbodiesel	W463 (90-)
S350 Turbodiesel	W140 (91-98)
360	
C36 AMG	W202 (92-00)
E36 AMG	W210 (95-)
380	
380SL 380SLC	R107 (70-89)
380SE 380SEL 380SEC	W126 (79-92)
400	
400E	W124 (84-97)
400SE 400SEL	W140 (91-98)
420	
420SL	R107 (70-889)
420SE 420SEL 420SEC	W126 (79-92)
E420	W124 (84-97)
S420 S420L SC420 CL420	W140 (91-98)
E420	W210 (95-)
430	
C43 AMG C43T AMG	W202 (92-00)
450	
450SL 450SLC 450SLC 5.0	R107 (70-89)
450SE 450SEL 450SEL 6.9	W116 (72-80)
500	
500SL 500SLC	R107 (70-89)
500SE 500SEL 500SEC	W126 (79-92)
500E E500	W124 (84-97)
500SL/SL500	R129 (88-01)
500GE	W463 (90-)
500SE 500SEL 500SEC S500 S500L SC500 CL500	W140 (91-98)
550	
C55 AMG C55T AMG	W202 (92-00)
560	
560SL 560SLC	R107 (70-89)
560SE 560SEL 560SEC	W126 (79-92)
600	
600	W100 (63-81)
E60 AMG	W124 (84-97)
600SL/SL600 SL60 AMG	R129 (88-01)
600SE 600SEL 600SEC S600 S600L SC600 CL600	W140 (91-98)

LIMOUSINES



W186

Chassis	Engine	Model	Years	HP	Production
186.000	186.920	300	1951-54	115	4563 (+2)
186.013	186.920	300 cabriolet D	1951-54	115	455
186.000	186.920	300b	1954-55	125	1639 (+10)
186.014	186.920	300b cabriolet D	1954-55	125	136
186.016	186.920/921	300c	1955-57	125	1429 (+3)
186.033	186.920/921	300c cabriolet D	1955-56	125	51

300c production includes 62 long wheel base versions
 Production numbers in brackets are chassis only



W188

Chassis	Engine	Model	Years	HP	Production
188.000	188.920	300S Cabriolet A	1951-55	150	203
188.011	188.920	300S Coupe	1951-55	150	216
188.012	188.920	300S Roadster	1952-55	150	141
188.013	199.980	300Sc Cabriolet A	1956-57	175	49
188.014	199.980	300Sc Coupe	1955-58	175	98
188.015	199.980	300Sc Roadster	1956-58	175	53



W189

Chassis	Engine	Model	Years	HP	Production
189.010	189.980/981	300d	1957-62	160	3077
189.011	189.980/981	300d with sunroof	1957-62	160	with above
189.033	189.980/981	300d cabriolet	1958-62	160	65



W100

Chassis	Engine	Model	Years	Production	HP
100.012	100.980	600 Limousine	1964-81	2190	250
100.014	100.980	600 Pullman-4 door	1964-81	304	250
100.615	100.980	600 Pullman Landaulet-4 door	1965-81	32	250
100.016	100.980	600 Pullman-6 door	1964-81	124	250
100.617	100.980	600 Pullman Landaulet-6 door	1967-81	26	250

The above production included 45 special protection versions. In addition, 1 coupe was produced and 1 non Pullman Landaulet

ROADSTERS



W198 Coupe and Roadster

Chassis	Engine	Model	Years	HP	Production
198.040	198.980	300SL coupe	1954-57	215	1,371
198.043	198.980	300SL coupe aluminum body	1954-57	215	29
198.042	198.980/982	300SL Roadster	1957-64	215	1,858



W121 Roadster

Chassis	Engine	Model	Years	HP	Production
121.040 coupe 121.042 roadster	121.921	190SL	1955-61	105	25,881
121.040 coupe 121.042 roadster	121.928	190SL	1961-63	105	(with above)



W113 Roadster

Chassis	Engine	Model	Years	HP	Production
113.042	127.981	230SL	1963-67	150	19,381
113.043	129.982	250SL	1966-68	150	5,196
113.044	130.983	280SL	1967-71	170	23,885

R107 Roadsters

Chassis	Engine	Model	Years	kW	Production
107.042	110.982/986	280SL	1974-85	136	25,436
107.043	116.982/984	350SL	1970-80	147/143	15,304
107.044	117.982/985	450SL	1971-80	165/160	66,298
107.045	116.960/962	380SL	1980-85	160/150	53,200
107.046	117.960/964	500SL	1980-89	177/180	11,812
107.041	103.982	300SL	1985-89	138	13,742
107.047	116.964	420SL	1985-89	160	2,148
107.048	117.967	560SL	1985-89	170	49,347



R107 Coupes

Chassis	Engine	Model	Years	kW	Production
107.022	110.982/986	280SLC	1974-81	136	10,666
107.023	116.982/984	350SLC	1971-80	147/143	13,925
107.024	117.982/985	450SLC	1972-80	165/160	31,739
107.026	117.960	450SLC 5.0	1977-80	177	1,636
107.025	116.960	380SLC	1980-81	160	3,789
107.026	117.960	500SLC	1980-81	177	1,133



R129 Roadsters

Chassis	Engine	Model	Years	kW	Production
129.060	103.984	300SL	1988-93	140	12,020
129.061	104.981	300SL-24	1988-93	170	26,898
129.058	104.943	SL280	1993-98	142	10,319
129.063	104.991	SL320	1993-98	170	32,223
129.064	112.943	SL320 (V6)	1997-01	165	7,070
129.066	119.960	500SL	1989-93	240	70,344
129.067	119.972	500SL SL500	1992-98	235	With above
129.068	113.961	SL500	1997-01	225	23,704
129.076	120.981/983	600SL SL600	1991-01	290	11,089
	M119 E60 AMG	SL60 AMG	1993	280	

R170 Roadsters

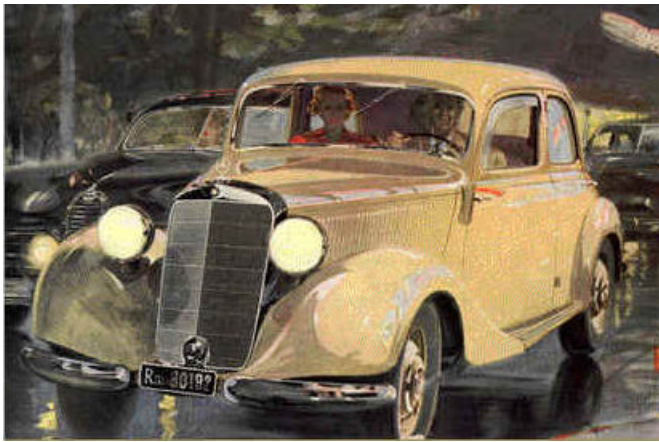
Chassis	Engine	Model	Years	kW	Production
170.435	111.946	SLK 200	1996-00	100	44,846
170.445	111.943	SLK 200 Kompressor	1996-00	141	12,353
170.447	111.973	SLK 230 Kompressor	1996-00	142	113,520



1946 - 1955

W136

Chassis	Engine	Model	HP	Years	Production
136.010	136.920/1	170V	38	1946-50	49,367
136.060	136.923	170Va	45	1950-52	(with above)
136.060	136.923	170Vb	45	1952-53	(with above)
136.040	136.922	170S	52	1949-52	28,764
136.042	136.922	170S Cabriolet A	52	1949-51	830
136.043	136.922	170S Cabriolet B	52	1949-51	1,603
136.081	136.926	170S-V	45	1953-55	3,122
136.110	636.915	170D	38	1949-50	33,823
136.160	636.916	170Da	40	1950-52	(with above)
136.160	636.916	170Db	40	1952-53	(with above)
136.181	636.931	170S-D	40	1953-55	14,887



W136



W191

W191 Sedans

Chassis	Engine	Model	HP	Years	Production
191.010	136.922	170Sb	52	1952-53	8,094
191.110	636.918	170D-S	40	1952-53	12,985

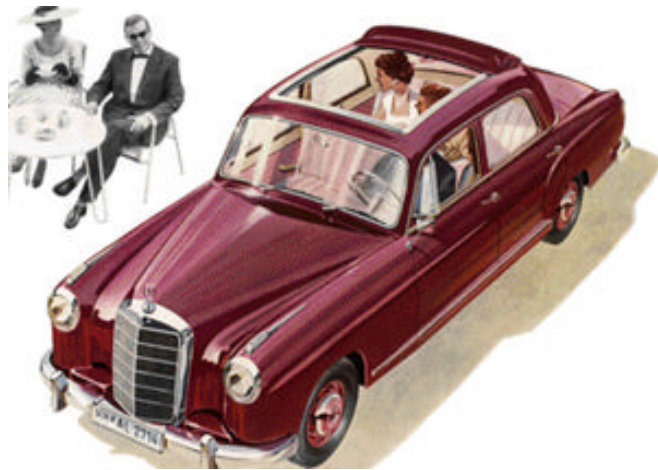


W187

Chassis	Engine	Model	Years	HP	Production
187.010	180.920	220 Sedan	1951-54	80	16,154
187.012	180.920	220 Cabriolet A	1951-55	80/85	1,278
187.013	180.920	220 Cabriolet B	1951-53	80	997
187.023	180.920	220 Coupe	1953-55	80/85	85
187.018	180.920	220 Open tourer	1952-53	80	41

PONTON / ROUNDY

W105 Sedan	
Chassis:	105.010
Engine:	180.921
HP (DIN)	85/90
Model:	219
Produced:	27845
Years:	1956-59



W120 Sedans

Chassis	Engine	Model	HP	Years	Production
120.010	136.925	180	52	1953-57	52,186
120.010	121.923	180a	65	1957-59	27,353
120.010	121.923	180b	68	1959-61	29,415
120.010	121.927	180c	68	1961-62	9,280
120.110	636.930	180D	40	1953-59	116,485
120.110	636.930	180Db	43	1959-61	24,676
120.110	621.914	180Dc	48	1961-62	11,822

Models with a sunroof had the chassis codes W120.011 and 120.111

An additional 3340 partial body versions of the W120 chassis were built



W121 Sedans

Chassis	Engine	Model	Years	HP	Production
121.010	121.920	190	1956-59	75	61,345
121.010	121.920	190b	1959-61	80	28,463
121.110	621.910	190D	1958-59	50	20,629
121.110	621.910	190Db	1959- 61	50	61,309

Models with a sunroof had the chassis codes W121.011 and 121.111

An additional 1550 partial body versions of the W121 chassis were built

W128

Chassis	Engine	Model	Years	HP	Production
128.010	127.980	220SE Sedan	1958-1959	115	1,974
128.030	127.980/983	220SE Cabriolet	1958-1960	115/120	1,112
128.037	127.980/983	220SE Coupe	1958-1960	115/120	830



W180 Sedan

Chassis	Engine	Model	Years	HP	Production
180.010	180.921	220a Sedan	1954-56	85	25,937
180.010	180.924	220S Sedan	1956-59	100/106	55,279



W180 Coupe and Convertible

Chassis	Engine	Model	Years	HP	Production
180.030	180.924	220S Coupe	1956-59	100/106	1,251
180.037	180.924	220S Cabriolet	1956-59	100/106	2,178

HECKFLOSSE / FINNY



W110 Sedans

Chassis	Engine	Model	HP	Years	Production
110.010	121.924	190c	80	1961-65	130554
110.010	121.940	200	95	1965-68	70207
110.011	180.945/949	230	105/120	1965-68	39,619
110.110	621.912	190Dc	55	1961-65	225645
110.110	621.918	200D	55	1965-68	161618

An additional 5859 chassis for special purpose bodies were built, 689 of these had long wheelbase



W111 Sedans

Chassis	Engine	Model	Years	HP	Production
111.010	180.940	220b	1959-65	95	69,691
111.010	180.947	230S	1965-68	120	41,107
111.012	180.941	220Sb	1959-65	110	161,119
111.014	127.982	220SEb	1959-65	120	66,086

An additional 341 model 230S chassis only were built



W111 Coupes

Chassis	Engine	Model	Years	HP	Production
111.021	127.984	220SEb Coupe	1960-65	120	14,173
111.021	129.980	250SE Coupe	1965-67	150	5,259
111.024	130.980	280SE Coupe	1967-71	160	3,797
111.026	116.980	280SE 3.5 Coupe	1969-71	200	3,270



W111 Cabriolets

Chassis	Engine	Model	Years	HP	Production
111.023	127.984	220SEb Cabriolet	1961-65	120	2,729
111.023	129.980	250SE Cabriolet.	1965-67	150	954
111.025	130.980	280SE Cabriolet	1967-71	160	1,390
111.027	116.980	280SE 3.5 Cabriolet	1969-71	200	1,232



W112 Sedans

Chassis	Engine	Model	Years	HP	Production
112.014	189.984/986	300SE	1961-65	160/170	5202
112.015	189.984/986	300SEL	1962-65	160/170	1546



W112 Coupes and Cabriolets

Chassis	Engine	Model	Years	HP	Production
112.021	189.985/987	300SE Coupe	1962-67	160/170	2,419
112.023	189.985/987	300SE Cabriolet	1962-67	170/170	708

S - CLASS

W108 Sedans

Chassis	Engine	Model	Years	HP	Production
108.012	108.920	250S	1965-69	130	74,677
108.014	129.980	250SE	1965-68	150	55,181
108.015	189.989	300SEb	1965-67	170	2,737
108.016	130.920	280S	1967-72	140	93,935
108.018	130.980	280SE	1967-72	160	91,051
108.019	130.980	280SEL	1968-71	160	8,250
108.057	116.980	280SE 3.5	1970-72	200	11,309
108.058	116.980	280SEL 3.5	1970-72	200	951 (+28 SP)
108.067	117.984	280SE 4.5	1971-72	198	13,527
108.068	117.984	280SEL 4.5	1971-72	198	8,173



W109 Sedans

Chassis	Engine	Model	Years	HP	Production
109.015	189.988	300SEL	1966-67	170	2,369
109.016	130.981	300SEL 2.8	1967-70	170	2,519
109.018	100.981	300SEL 6.3	1967-72	250	6,526
109.056	116.981	300SEL 3.5	1969-72	200	9,583
109.057	117.981	300SEL 4.5	1971-72	198	2,553



W116 Sedans

Chassis	Engine	Model	Years	kW	Production
116.020	110.922	280S	1972-80	118	122,848
116.024	110.983/985	280SE	1972-80	136	150,593
116.025	110.983/985	280SEL	1973-80	136	7,032
116.028	116.983/985	350SE	1972-80	147/151	51,100
116.029	116.983/985	350SEL	1973-80	147/151	4,266
116.032	117.983/986	450SE	1972-80	165	41,604

116.033	117.983/986	450SEL .	1972-80	165	59,578
116.036	100.985	450SEL 6.9	1975-80	210	7,380
116.120	617.950	300SD Turbodiesel	1977-80	82/89	28,634

An additional 292 special protection versions of the W116 were also produced



W126 Sedans

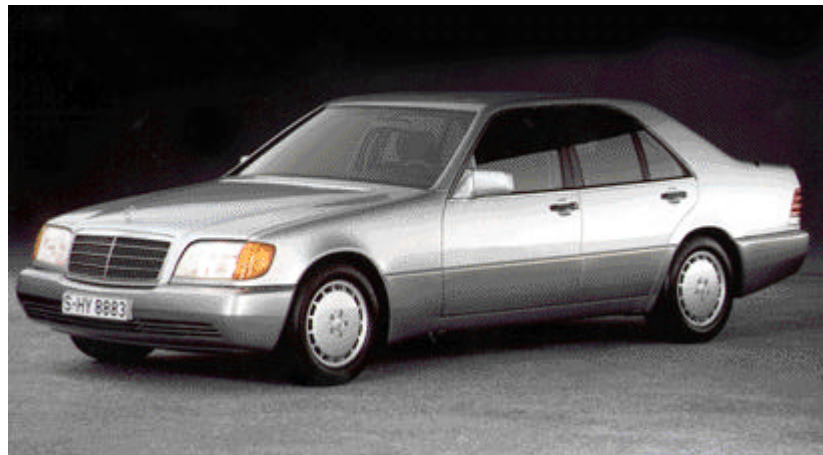
Chassis	Engine	Model	Years	kW	Production
126.020	103.941	260 SE	1985-91	122	20,836
126.021	110.924/926	280S	1979-85	115	42,996
126.022	110.987/989	280SE	1979-85	136	133,955
126.023	110.987/989	280SEL	1979-85	136	20,655
126.024	103.981	300SE	1985-91	138	105,422
126.025	103.981	300SEL	1985-91	138	40,956
126.032	116.961/963	380SE	1979-85	160/150	58,239
126.033	116.961/963	380SEL	1979-85	160/150	27,014
126.034	116.965	420 SE	1985-91	160/170	13,996
126.035	116.965	420SEL	1985-91	160/170	74,017
126.036	117.961/963	500SE	1979-85	177/170	33,418
126.036	117.965	500SE	1985-91	180/195	with above
126.037	117.961/963	500SEL	1979-85	177/170	72,639
126.037	117.965	500SEL	1985/91	180/195	with above
126.038	117.968	560SE	1988-91	200/220	1,252
126.039	117.968	560SEL	1985-92	200/220	75,071
126.120	617.951	300SD Turbodiesel	1979-85	89/92	78,725
126.125	603.961	300SDL Turbodiesel	1985-87	110	13,830
126.134	603.970	350SD Turbodiesel	1990-91	100	2,066
126.135	603.970	350SDL Turbodiesel	1990-91	100	2,925

An additional 1463 special protection versions of the W126 were also produced



C126 Coupes

Chassis	Engine	Model	Years	kW	Production
126.043	116.963	380SEC	1980-85	150	11,267
126.044	117.963	500SEC	1980-85	170	30,184
126.044	117.965	500SEC	1985-91	180/195	with above
126.045	117.968	560SEC	1985-91	200/220	28,929
126.046	116.965	420 SEC	1985-91	160/170	3,680



W140 S-Class

Chassis	Engine	Model	Years	kW	Production
140.028	104.944	300SE2.8 /S280	1992-98	142	22,784
140.032	104.990/994	300SE /S320	1991-98	170	98,095
140.033	104.990/994	300SEL/S320L	1991-98	170	85,346
140.042	119.971	400SE/S420	1990-98	210/205	14,277
140.043	119.971	400SEL/S420L	1990-98	210/205	35,191
140.050	119.970	500SE/S500	1990-98	240/235	21,942
140.051	119.970	500SEL/S500L	1990-98	240/235	65,065
140.056	120.980 (V12)	600SE/S600	1990-98	300/290	3,399
140.057	120.980 (V12)	600SEL/S600L	1990-98	300/290	32,517
140.134	603.971	300SD/S350 Turbodiesel	1991-96	110	20,518
140.136	606.960	S300 Turbodiesel	1995-98	130	7,583



C140 Coupes

Chassis	Engine	Model	Years	kW	Production
140.063	119.971/981	S420Coupe/CL420	1994-98	205	2,496
140.070	119.970/980	500SEC/S500Coupe/CL500	1992-98	235	14,953
140.076	120.980/982	600SEC/S600Coupe/CL600	1992-98	290	8,573

E - CLASS



W115 Sedans

Chassis	Engine	Model	Years	kW	Production
115.015	115.923	200/8	1967-76	70	288,785
115.010	115.920	220/8	1967-73	77	128,739
115.017	115.951	230.4	1972-76	81	87,765
115.110	615.912	220D/8	1967-76	44	420,273
115.114	617.910	240D 3.0	1974-76	59	53,690
115.115	615.913	200D/8	1967-76	40	339,927
115.117	616.916	240D	1973-76	48	131,319



W114 Sedans

Chassis	Engine	Model	Years	kW	Production
114.010	114.920	250	1967-72	96	78,303
114.011	130.923	250 2.8	1970-76	96	34,061
114.015	180.954	230/8 230.6	1967-76	88	221,783
114.060	110.921	280	1972-76	118	44,537
114.062	110.981	280E	1972-76	136	22,836



W114 Coupes

Chassis	Engine	Model	Years	kW	Production
114.021	114.920	250 C	1968-72	96	8824
114.023	130.923	250C 2.8	1969-76	96	11,768
114.022	114.980	250CE	1968-72	110	21787
114.073	110.921	280C	1972-76	118	13,151
114.072	110.981	280CE	1972-76	136	11,518



W123 Sedans

Chassis	Engine	Model	Years	kW	Production
123.020	115.938	200	1976-80	69	158,772
123.220	102.920	200	1980-85	80	217,315
123.023	115.954	230	1975-80	80	196,185
123.223	102.980	230E	1979-85	100	245,588
123.026	123.920	250	1975-85	95/103	122,864
123.030	110.923	280	1975-81	115	33,206
123.033	110.984	280E	1975-85	130/136	126,375
123.120	615.940	200D	1975-85	40	378,138
123.126	615.941	220D	1975-79	44	56,736
123.123	616.912	240D	1975-85	48	454,780
123.130	617.912	300D	1975-85	59/65	331,999
123.133	617.952	300D Turbodiesel	1981-85	89/92	75,261

Production numbers for 250, 280E, 240D, 300D include long wheelbase and special purpose chassis.



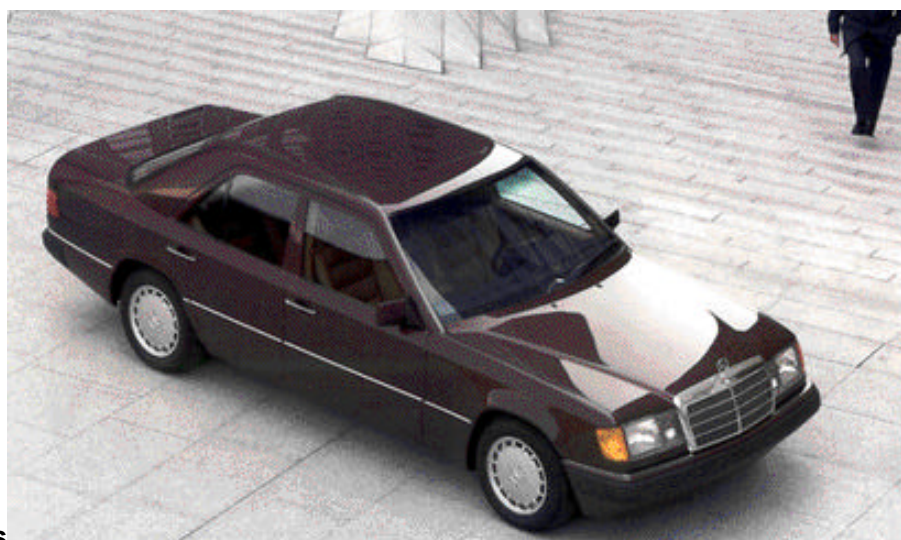
C123 Coupes

Chassis	Engine	Model	Years	kW	Production
123.043	115.954	230C	1976-80	80	18,675
123.243	102.980	230CE	1980-85	100	29,858
123.050	110.923	280C	1976-80	115	3,704
123.053	110.984	280CE	1976-85	130/136	32,138
123.150	617.912	300CD	1977-81	58/64	7,502
123.153	617.952	300CD Turbodiesel	1981-85	89/92	8,007



S123 Station Wagons

Chassis	Engine	Model	Years	kW	Production
123.280	102.920	200T	1980-86	80	18,860
123.083	115.954	230T	1978-80	80	6,884
123.283	102.980	230TE	1979-86	100	42,284
123.086	123.920	250T	1977-82	95/103	7,704
123.093	110.984	280TE	1977-86	130/136	19,789
123.183	616.912	240TD	1978-86	53	38,903
123.190	617.912	300TD	1977-86	59/65	36,874
123.193	617.952	300TD Turbodiesel	1979-86	92	28,219



W124 Sedans

Chassis	Engine	Model	Years	kW	Production
124.020	102.922	200	1984-90	80	110,354
124.121	102.963	200E	1985-92	90/87	176,660
124.019	111.940	200E / E200	1992-95	100	82,588
124.023	102.982	230E	1984-92	100	374,422
124.022	111.960	220E / E220	1992-96	110	105,340
124.026	103.940	260E	1984-92	125/122	154,391
124.226	103.943	260E 4MATIC	1986-91	118	1,943
124.028	104.942	280E / E280	1992/95	145	57,302
124.030	103.980/983	300E	1984-92	140/138	258,063
124.230	103.985	300E/E300 4MATIC	1985-95	132	14,202
124.031	104.980	300E-24	1988-92	162	19,300
124.032	104.992	320E / E320	1992-95	162	63,950
124.034	119.975	400E / E420	1991-95	205	22,802
124.036	119.974	500E / E500	1990-95	240/235	10,479
	M119E60	E60 AMG	1993-94	280	
124.120	601.912	200D/E200D	1984-95	53/55	236,926
124.125	602.912	250D	1984-93	66/69	236,811

124.126	605.911	E250Diesel	1992-96	83	41,411
124.129	602.962	250D/E250 Turbo	1988-95	93	48,876
124.130	603.912	300D	1984-93	80/83	131,647
124.131	606.910	E300 Diesel	1992-95	100	23,166
124.330	603.913	300D 4MATIC	1985-91	80/83	1,485
124.133	603.960	300D/E300 Turbo	1985-95	105/108	38,908
124.333	603.963	300D Turbo 4MATIC	1987-93	105/108	1,862



C124 Coupé

Chassis	Engine	Model	Years	kW	Production
124.040	102.963	200CE	1990-92	90/87	5,912
124.040	111.940	200CE / E200 Coupé	1992-96	100	7,848
124.043	102.982	230CE	1986-92	97	33,675
124.042	111.960	220CE / E220 Coupé	1992-96	110	12,337
124.050	103.983	300CE	1986-92	132	43,486
124.051	104.980	300CE-24	1988-92	162	24,463
124.052	104.992	320CE / E320 Coupé	1992-96	162	13,768
	M104E36	E36 AMG Coupé	1993-96	200	



A124 Cabriolet

Chassis	Engine	Model	Years	kW	Production
124.060	111.940	E200 Cabriolet	1993-97	100	6,922
124.062	111.960	E220 Cabriolet	1992-97	110	8,458
124.061	104.980	300CE-24 Cabriolet	1990-93	162	6,343
124.066	104.992	E320 Cabriolet	1992-97	162	12,229
	M104E36	E36 AMG Cabriolet	1993-97	200	



S124 Station wagons

Chassis	Engine	Model	Years	kW	Production
124.080	102.922	200T	1985-90	80	7,476
124.081	102.963	200TE	1988-92	90/87	20,555
124.079	111.940	200TE / E200T	1992-96	100	15,279
124.083	102.982	230TE	1985-92	100	64,945
124.082	111.960	220TE / E220T	1992-96	110	22,057
124.088	104.942	280TE / E280T	1992/96	145	12,177
124.090	103.983	300TE	1985-92	138	41,775
124.290	103.985	300TE/E300T 4MATIC	1986-95	132	12,094
124.091	104.980	300TE-24	1989-92	162	6,282
124.092	104.992	320TE / E320T	1992-96	162	18,368
	M104E36	E36 AMG	1993-96	200	
124.180	601.912	200TD	1985-91	53/55	7,373
124.185	602.912	250TD	1985-93	66/69	43,628
124.186	605.911	E250 Diesel T	1992-96	83	15,625
124.188	602.962	250TD/E250 Turbodiesel T	1990-96	93	4,745
124.190	603.912	300TD	1986-93	80/83	21,901
124.191	606.910	E300 Diesel T	1992-96	100	9,071
124.193	603.960	300TD Turbodiesel	1985-95	105/108	14,844
124.393	603.963	300TD / E300 Turbodiesel 4MATIC	1986-95	105/108	2,317

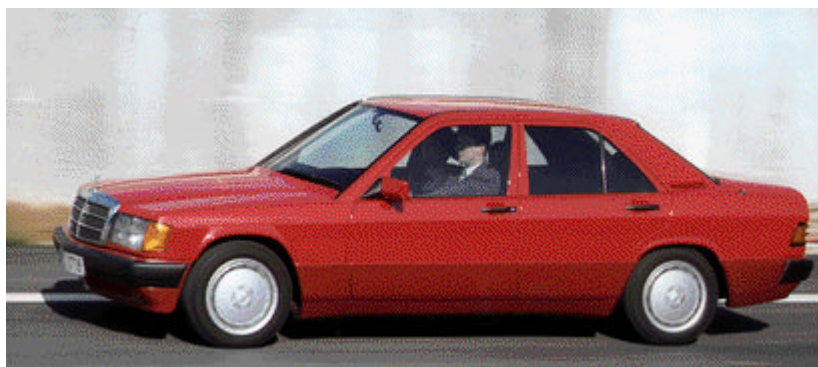
Notes:

4MATIC: Chassis includes additional drive to the front wheels

W 124 also included the following Chassis:

Chassis	Model	Production
124.027	260E LWB	1006
124.029	E280 LWB	379
124.127	250D LWB	957
124.003	230E 'F' Chassis only	224
124.004	230E 'VF' Chassis only	711
124.105	250D 'F' Chassis only	1042
124.106	250D 'VF' Chassis only	2973
124.007	260E 'VF' Chassis only	1049
124.008	E280 'VF' Chassis only	399

C-CLASS



W201 Sedans

Chassis	Engine	Model	Years	kW	Production
201.022	102.921	190	1982-84	66	35,021
201.023	102.924	190	1984-91	77	83,540
201.024	102.962	190E/190E 2.0	1982-93	90	638,180
201.028/024	102.985	190E 2.3	1983-93	100	186,610
201.034	102.983	190E 2.3-16	1983-88	136/130	19,487
201.035	102.990	190E 2.5-16	1988-93	143	5,743
201.036	102.991	190E 2.5-16 Evolution I	1989	143	502
201.036	102.992	190E 2.5-16 Evolution II	1990	173	502
201.029	103.942	190E 2.6	1986-93	122	104,907
201.018	102.910	190E 1.8	1990-93	80	173,354
201.122	601.911	190D	1982-93	53	452,806
201.122	601.921	190D 2.2	1983-86	54	10,560
201.126	602.911	190D 2.5	1984-93	66	147,502
201.128	602.961	190D 2.5 Turbo	1986-93	90	20,915



W202 Sedans

Chassis	Engine	Model	Years	kW	Production
202.018	111.920/921	C180	1992-00	90	583,514
202.020	111.941/945	C200	1993-00	100	193,514
202.025	111.944	C200 Kompressor	1995-00	132/141	12,344
202.022	111.961	C220	1992-96	110	140,915
202.023	111.974	C230	1995-98	110	59,706
202.024	111.975/973	C230 Kompressor	1995-00	142	63,595
202.026	112.910	C240	1997-00	125	40,878
202.028	104.941	C280	1992-97	142	103,374
202.029	112.920 (V6)	C280	1996-00	145	40,146
202.028	104.9936	C36 AMG	1993-97	206	5,221
202.033	113.944	C43 AMG	1997-00	225	3,085
202.033	113.983	C55 AMG	1998-00	255	Not recorded

W202 Diesel Sedans

Chassis	Engine	Model	Years	kW	Production
202.120	601.913	C200 Diesel	1992-95	55	39,207
202.122	604.915	C200 Diesel	1996-99	65	1.063
202.134	611.960	C200 CDI	1998-00	75	29,811
202.121	604.910	C220 Diesel	1992-99	70	146,193
202.133	611.960	C220 CDI	1997-00	92	58,951
202.125	605.910	C250 Diesel	1992-96	83	44,801
202.128	605.960	C250 Turbodiesel	1995-00	110	59,772



202 Station Wagons

Chassis	Engine	Model	Years	kW	Production
202.078	111.921	C180 T	1995-00	90	69,242
202.081	111.952	C180 2 litre T	2000-01	95	2,295
202.080	111.945	C200 T	1995-00	100	24,634
202.082	111.944	C200 Kompressor T	1996-00	132/141	4,636
202.087	111.956	C200 Kompressor T	2000-01	120	4,605
202.083	111.974	C230 T	1995-98	110	6,299
202.085	111.973	C230 Kompressor T	1996-00	142	2,483
202.086	112.910	C240 T	1996-00	125	14,803
202.088	112.950	C240 T (2.6)	2000-01	125	1,651
202.089	112.920 (V6)	C280 T	1996-00	145	2,823
202.093	113.944	C43 AMG T	1997-00	225	772
202.093	113.983	C55 AMG T	1998-00	255	Not recorded

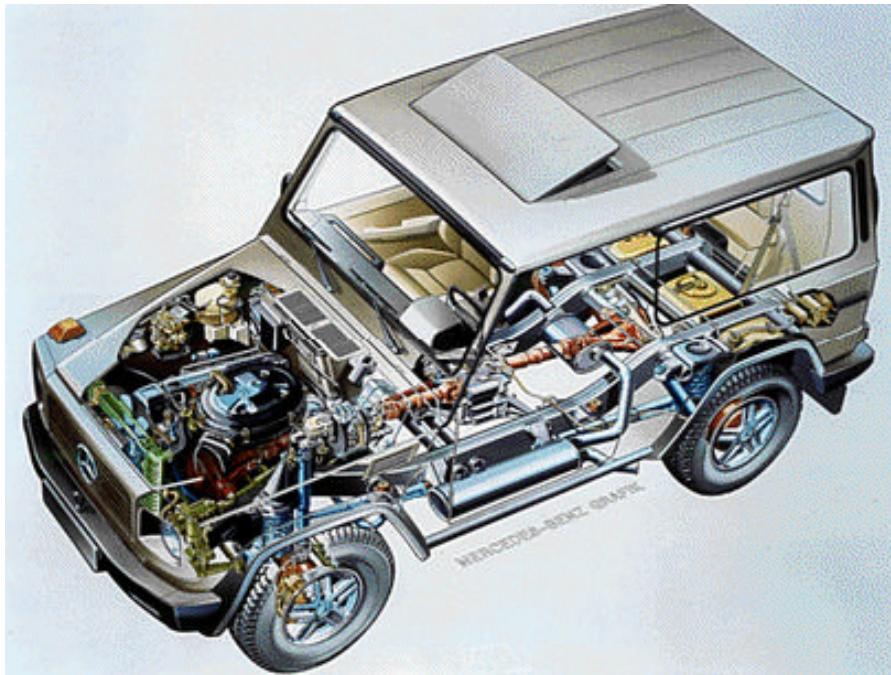
S202 Diesel Station Wagons

Chassis	Engine	Model	Years	KW	Production
202.182	604.915	C200 Diesel	1995-98	65	174
202.194	611.960	C200 CDI T	1998-01	75	18,117
202.182	604.910	C220 Diesel T	1995-99	70	17,988
202.193	611.960	C220 CDI T	1997-01	92	50,104
202.188	605.960	C250 Turbodiesel T	1995-00	110	23,245

4 WHEEL DRIVE

W460 Short and Long Wheelbase

Model	Engine	Years	kW	Production
230G	115.973/102.944	1979-89	66/80	4,138
230GE	102.981/987	1982-91	92	6,884
200GE	102.964	1986-91	90	610
280GE	110.994	1979-91	115	9,945
240GD	616.936	1979-91	53	7,645
250GD	602.930	1987-92	62	2,051
300GD	617.931	1979-91	59/65	20,415



W461 Short and Long Wheelbase

Model	Engine	Years	kW	Production
230GE	102.979	1991-96	90	331
290GD	602.942	1991-	70	
290GD Turbodiesel	602.982	1997-	88	

W463 Short and Long Wheelbase

Model	Engine	Years	kW	Production
200GE / G200	102.965	1990-94	87	376
230GE / G230	102.989	1990-94	93	382
300GE / G300	103.987	1990-96	125	2,132
500GE	117E50	1993-94	177	446
G320	104.996	1994-	155/158	
250GD	602.931	1990-92	69	241
300GD/G300 diesel	602.931	1990-94	83	2,547
350GD turbo/G350 turbodiesel	603.931	1992-96	100	1841
G300 turbodiesel	606.964	1996-	130	